

# Knitted Bunnies

Photos & Instructions by Tandy Imhoff

## Materials:

- Approximately 50 yds yarn\*
- Knitting needles 2 sizes smaller than recommended for your yarn type
- Fiber filling
- Tapestry needle
- Appropriately sized craft pom-pom or bit of fleece (for tail)



\*Any weight and type of yarn can be used, look at the label and use knitting needles that are 2 sizes smaller than what is recommended for your yarn. Approximate finished bunny sizes noted below:

Bulky on Sz 8 needles = 4 ¼" high x 6 ¼" long

Worsted on Sz 6 needles = 4" high x 5 ¼" long

Sport on Sz 4 needles = 3 ¼" high x 4 ½" long

DK on Sz 2 needles = 3" high x 4" long

Fingering on Sz 0 needles = 2 ¾" high x 3 ½" long

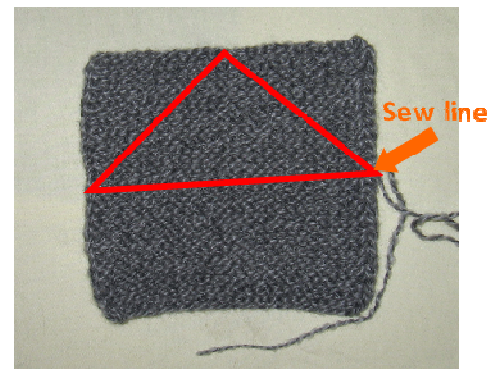
## Directions:

Cast on 28 stitches. (Any number of stitches can be used to adjust the finished size larger or smaller.)

Knit every row for approximately 48 rows or until square. Weave in all ends.

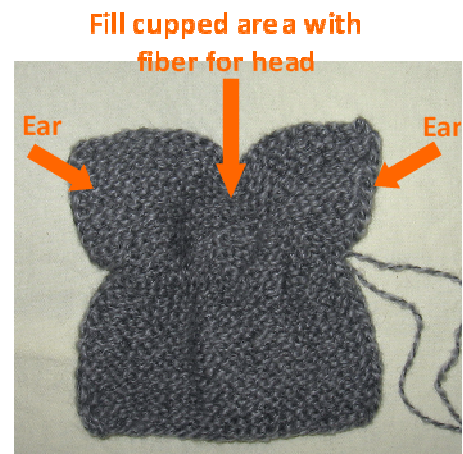
## Step 1:

Cut an 18" piece of yarn from the ball and, using a running stitch, sew across the square at the halfway mark and then sew diagonally to the middle of the upper edge, and then sew back down diagonally to the beginning. This creates a triangle of running stitches.



## Step 2:

Gently pull on both ends of the yarn (that you used to sew the triangle). You will begin to see a cupped area begin to form as the two triangles (for the ears) become noticeable. Fill the cupped area with fiber as you continue pulling the yarn ends to 'cinch' up the neck. The bottom edge (middle of the square) of the ears, should fold in to the center, to shape the ears. Be sure that you use enough fiber to tightly fill the head, without filling it too full (so fiber shows between the stitches). Make sure that one end is significantly longer than the other (this will be used to sew the body). It should measure at least twice the length of the body.



### Step 3:

This is what it should look like at this stage.

Pull the ends tight and using the shorter yarn end, sew through the opposite edge, then tie the ends in a knot. Sew a few stitches through the ears, to keep the fiber filling from coming out and to insure that the ears stay in place. Weave in this end and cut the yarn.



### Step 4:

Using the long end, sew the top edges shut and sew a running stitch around the open end. Stuff the body with fiber filling and pull on the yarn end to cinch the body closed. Sew a few stitches to insure that the body stays closed and sew on the pom-pom, covering the hole. Be sure that the pom-pom is securely sewn on, so that it can not fall off and become a choking hazard. (I used the yarn, though you can sew it on with a smaller needle and thread.) Weave in the end and cut. You can also needle felt a bit of fleece on instead of using a pom-pom.



#### Optional:

*Using colored yarn or embroidery floss, you can embroider a face onto the bunny. I do not recommend using buttons or any other small embellishments, if you intend to gift this to a child, as small objects can be a choking hazard.*

